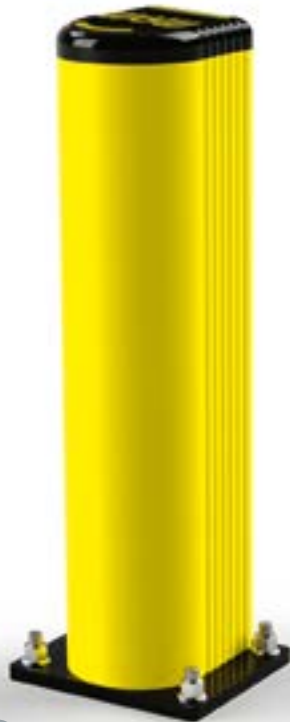


**GRD 150**



FAST  
AND EASY  
TO INSTALL

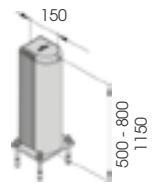


**M12  
GALVANISED STEEL**



**GRD 150 \* 500  
800  
1150**

Packing **unpacked on pallet**  
Colour **B M**



Equipped with accessories



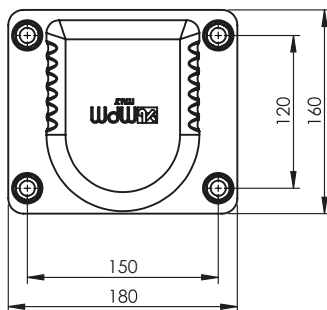
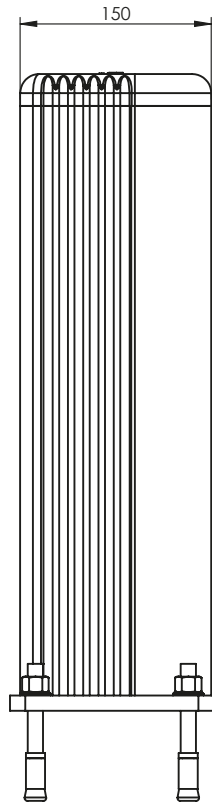
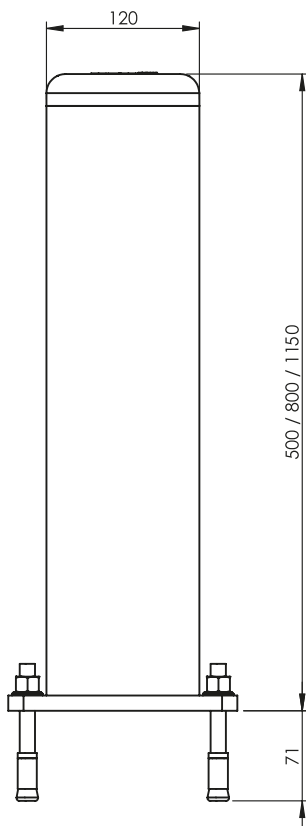
## 02. BOLLARD

# GRD 150

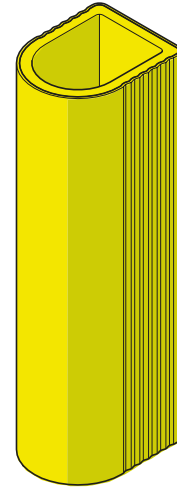
PALO PROTEZIONE  
BOLLARD



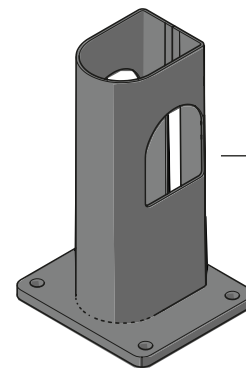
**IMPACT TEST PASSED**  
according to  
EN 15512:2009



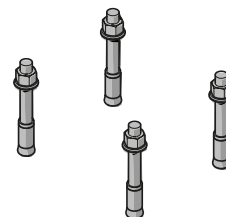
GRT 150



GR 150



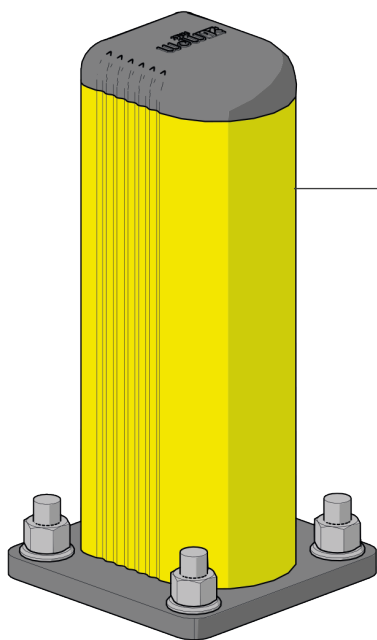
FIX P 150



M12

# GRD 90/150

ISTRUZIONI DI INSTALLAZIONE  
ASSEMBLY INSTRUCTIONS



**WARNING**  
The distance of installation depends on speed and weight of vehicle

